

Washers / Levelling disks

SPECIFICATION

Stainless Steel **NI**

- AISI 304
- turned, blank

INFORMATION

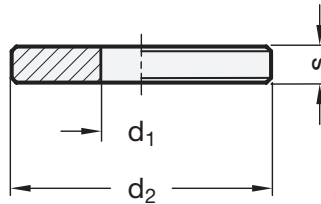
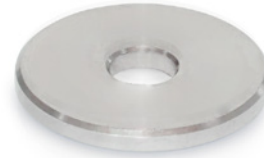
Washers / Levelling disks GN 6343 are used mainly in mechanical engineering and jigmaking is required for levelling.

ON REQUEST

- other dimensions
- chemically blackened surface

TECHNICAL INFORMATION

- Stainless Steel characteristics (see page A26)



GN 6343

STAINLESS STEEL

| Description | d1 +0.1/+0.3 | d2 -0.2 | s ±0.1 | ⚖ |
|-------------------|-----------------|---------|--------|----|
| GN 6343-NI-4-8-1 | 4 | 8 | 1 | 3 |
| GN 6343-NI-4-8-2 | 4 | 8 | 2 | 6 |
| GN 6343-NI-4-12-1 | 4 | 12 | 1 | 8 |
| GN 6343-NI-4-12-2 | 4 | 12 | 2 | 16 |
| GN 6343-NI-4-12-3 | 4 | 12 | 3 | 24 |
| GN 6343-NI-5-10-1 | 5 | 10 | 1 | 5 |
| GN 6343-NI-5-10-2 | 5 | 10 | 2 | 10 |
| GN 6343-NI-5-10-3 | 5 | 10 | 3 | 14 |
| GN 6343-NI-5-15-2 | 5 | 15 | 2 | 30 |
| GN 6343-NI-5-15-3 | 5 | 15 | 3 | 37 |
| GN 6343-NI-6-12-1 | 6 | 12 | 1 | 7 |
| GN 6343-NI-6-12-2 | 6 | 12 | 2 | 14 |
| GN 6343-NI-6-12-3 | 6 | 12 | 3 | 22 |
| GN 6343-NI-6-20-2 | 6 | 20 | 2 | 30 |
| GN 6343-NI-6-20-3 | 6 | 20 | 3 | 60 |
| GN 6343-NI-6-20-5 | 6 | 20 | 5 | 80 |
| GN 6343-NI-8-16-2 | 8 | 16 | 2 | 2 |
| GN 6343-NI-8-16-3 | 8 | 16 | 3 | 4 |
| GN 6343-NI-8-16-5 | 8 | 16 | 5 | 6 |

GN 6343

STAINLESS STEEL

| Description | d1 +0.1/+0.3 | d2 -0.2 | s ±0.1 | ⚖ |
|--------------------|-----------------|---------|--------|-----|
| GN 6343-NI-8-25-2 | 8 | 25 | 2 | 6 |
| GN 6343-NI-8-25-3 | 8 | 25 | 3 | 10 |
| GN 6343-NI-8-25-5 | 8 | 25 | 5 | 17 |
| GN 6343-NI-10-20-2 | 10 | 20 | 2 | 4 |
| GN 6343-NI-10-20-3 | 10 | 20 | 3 | 6 |
| GN 6343-NI-10-20-5 | 10 | 20 | 5 | 10 |
| GN 6343-NI-10-30-3 | 10 | 30 | 3 | 15 |
| GN 6343-NI-10-30-5 | 10 | 30 | 5 | 30 |
| GN 6343-NI-12-20-2 | 12 | 20 | 2 | 3 |
| GN 6343-NI-12-20-3 | 12 | 20 | 3 | 4 |
| GN 6343-NI-12-20-5 | 12 | 20 | 5 | 8 |
| GN 6343-NI-12-30-3 | 12 | 30 | 3 | 14 |
| GN 6343-NI-12-30-5 | 12 | 30 | 5 | 23 |
| GN 6343-NI-16-20-2 | 16 | 20 | 2 | 18 |
| GN 6343-NI-16-20-3 | 16 | 20 | 3 | 27 |
| GN 6343-NI-16-20-5 | 16 | 20 | 5 | 45 |
| GN 6343-NI-16-30-3 | 16 | 30 | 3 | 120 |
| GN 6343-NI-16-30-5 | 16 | 30 | 5 | 200 |